

The NIMBLE THIMBLE

www.nbqa.org



PRESIDENT'S MESSAGE

Welcome back from summer vacation! You don't have to write an essay on how you spent it, but I hope it was fun. Welcome to all our new members! I hope everyone takes the time to greet you at our September meeting. We have a busy year ahead of us, with some great speakers and workshops planned, topped off by our biennial quilt show in April. The show will be called Touching Stars, so get going on your star quilts or any other kind of quilt, because we want everyone to contribute to our show. We also hope many of you will volunteer to help with the show. It is a great way to get to know your fellow members better and make new friends.

Last year we applied for non-profit status to the IRS. We have always tried to operate like a non-profit since our inception in 1976, but we decided to make it official. Unfortunately our 37 year procrastination coincided with an IRS non-profit approval scandal, which I'm sure some of you have heard about. So it's taking a little longer than we expected, and it may not happen until next year.

I hope everyone has been checking out our redesigned website, www.nbqa.org. If you have any questions or comments, please direct them to Maria Knight, who heads up the website committee.

This is my last year as President, and our elections are 10 months away, but I hope some of you will start thinking about serving as President of NBQA next year or in the future. It has been a great experience for me. I tend to be on the shy, introverted side, so standing in front of the group and shouting when the microphone accidentally got set on mute was a stretching exercise. The leadership experience has translated into personal and career growth, and it really doesn't take up that much of your time. Please give it some thought and feel free to ask me any questions about the responsibilities.

Lastly, I have some sad news: Cindy Janetacos, one of our former members, passed away in July. She was an awesome quilter and a really special person, and we will miss her very much.

Peace, Joan

NEXT MEETING:

September 19, 2013 7:00 PM

BOD meets at 6:00 PM

East Greenwich United Methodist Church

Please Bring:

- Your nametag
- Show & Tell items
- Summer Challenge entry, if you made one
- Fat Quarter of the Month (theme is batik)
- Money/check for workshops
- Magazines to swap
- Refreshment, if signed up



FAT QUARTER LIST

This year, there is a **limit of five** fat quarters per person in each drawing.

September	batiks
October	Kaffe Fassett inspired
November	"ugly"
January	anything you want
February	geometrics
March	sports
April	Quilt Show / no drawing
May	red, white & blue

Narragansett Bay Quilter's Association
GENERAL MEETING -- May 16, 2013

President: Joan Potter called the meeting to order at 7:02 pm. It was announced there are 3 new members and 1 new associate member. Each was asked to stand and be acknowledged. All membership needs to be renewed this evening or mailed in to Sue Ellis before June 1. Best of Guild Quilt Show is at Images this summer August 8-10, 2013, Lowell Quilt Festival. Gladys Grace will represent our guild. Her quilt was machine quilted by April Gilroy. Hope Barton of the nominating committee will present the slate of officers for next year's BOD 2013-2014. The Website Committee announced a new website: nbqa.org. The NBQA Quilt Show is April 26-27, 2014 at NKHS. Geri Lemay is handling the Basket Raffle which benefits the fundraising. Please consider donating a basket of goods beginning at the September 2013 meeting.

Programs/Workshops: The next workshop/ program scheduled in September is "Wild Woman - Embellishing Ice Dying" with Cathey LaBonte. Workshops will be held at The Sewing Room, Exeter, RI. Allison Wilbur was our guest speaker. She announced the Summer Challenge: "Who Me?" - A 24"x24" self-portrait as a quilter. These quilts will be displayed at the April Quilt Show in 2014.

Secretary: Barbara Stetson asked for acceptance of the minutes to April's meeting, accepted. The following slate of officers for 2013-14 were elected:

President: Joan Potter

Vice President: Allison Wilbur

Treasurer: Diana Funke

Secretary: Kathleen Scudieri

Block of the Month: Sue Chace with Donna Chavez

Comfort Quilts: Mary Padbury with Karen Ouhrabka

Door Prize: Natalie Bielawski and Norrene McGearry

Hospitality: Peggy Lane and Charlotte Santucci,
with Phyllis Cayer and Cheryl Boyd

Special Events: Louise Pankiewicz

Program: Hope Barton, with Kaye Johnson and Jill Bowen

Librarian: Maria Lage

Membership: Judy Chase with Pat Cole
and Barbara Stetson

Newsletter: Kathy Barrette, Sara Crocker
and Linda Gardner

NEQM: Ginny Perry and Sue Stedman

Quilt Show: Joan Potter and Sandy Pare

Fat Quarter of the Month: Sharon Bibeault

Website: Maria Knight

Publicity: Cathey LaBonte

Historian: Maribeth Traer

Treasurer: Diana Funke gave the Treasurer's report:

Income for April: \$ 953.00

YTD Income: \$13,748.00

Expenses for April \$ 3,649.34

YTD Expenses \$20,917.02

4/30/2013 Checking Account Balance: \$18,818.89

(Quilt Show 2012- \$13,277.32)

Special Events: The next bus trip will be to Quilters Gathering on November 2, 2013.

Fat Quarter of the Month: The new fat quarters will be announced in the fall.

The meeting was adjourned at 8:33 pm

NBQA Final Budget 2013 – 2014 (to be voted on at September Meeting)

	Budget 2012-2013	YTD (May 31)	Proposed 2013-2014
Income			
Block of the Month	\$ 0.00	\$ 0.00	\$ 0.00
Door Prizes	\$ 0.00	\$ 0.00	\$ 0.00
Historian	\$ 0.00	\$ 0.00	\$ 0.00
Hospitality	\$ 0.00	\$ 0.00	\$ 0.00
Library	\$ 0.00	\$ 11.00	\$ 0.00
Newsletter	\$ 350.00	\$ 260.00	\$ 300.00
Workshops	\$ 5,500.00	\$ 3,165.00	\$ 4,575.00
Special Events	\$ 1,800.00	\$ 5,106.00	\$ 1,800.00
Membership	\$ 7,500.00	\$10,397.00	\$ 7,500.00
Raffle Tickets	\$ 0.00	\$ 0.00	\$ 1,600.00
Quilt Show	\$ 0.00	\$ 280.00	\$17,215.00
Small Quilt, Silent Auctions	\$ 750.00	\$ 1,453.00	\$ 1,400.00
Miscellaneous	\$ 0.00	\$ 0.00	\$ 0.00
Total Income	\$15,900.00	\$20,682.00	\$34,390.00
Expenses			
Block of the Month	\$ 150.00	\$ 145.22	\$ 150.00
Door prizes	\$ 200.00	\$ 184.02	\$ 350.00
Historian	\$ 25.00	\$ 0.00	\$ 25.00
Hospitality	\$ 400.00	\$ 691.98	\$ 750.00
Library	\$ 250.00	\$ 235.16	\$ 250.00
Newsletter	\$ 400.00	\$ 354.23	\$ 400.00
Workshops and Programs	\$10,000.00	\$ 7,457.50	\$ 8,000.00
Special Events	\$ 1,800.00	\$ 4,939.00	\$ 1,800.00
Rent - General Meetings	\$ 1,125.00	\$ 1,175.00	\$ 1,025.00
Rent - Workshops	\$ 675.00	\$ 675.00	\$ 675.00
Fees and dues	\$ 800.00	\$ 1,026.76	\$ 200.00
Membership	\$ 700.00	\$ 612.37	\$ 600.00
Quilt Show	\$ 0.00	\$ 96.00	\$13,000.00
Raffle Quilt	\$ 350.00	\$ 161.38	\$ 350.00
Comfort Quilts	\$ 700.00	\$ 252.05	\$ 300.00
Capital expenditures	\$ 0.00	\$ 0.00	\$ 500.00
Donations	\$ 750.00	\$ 2,050.00	\$ 3,000.00
Website	\$ 0.00	\$ 898.05	\$ 1,500.00
NEQM		\$ 1,453.00	\$ 1,400.00
Miscellaneous	\$ 300.00	\$ 106.04	\$ 200.00
Total Expenses	\$18,625.00	\$22,512.76	\$34,475.00

New/returning NBQA members (since printing of membership book)

Carol Johnson

52 Brook Farm Road, South
South Kingstown, R.I. 02879
401-783-0537
carolj9000@hotmail.com

Mayfair Hall

1227 Frenchtown Road
E. Greenwich, RI 02818
401-885-1098
Mayfairh1227@gmail.com

Jodi Frank

32 Stillwater Road
Charlestown, RI 02813

Cheryl Heuer

9 Covington Court
Westerly, RI 02891
860-908-2955
cfh0734@gmail.com

Susan Arent

108 Cedar Lane
Griswold, CT 06351
860-376-5767
suearant@hotmail.com

Pamela Burnham

4 Old Carriage Rd
Westerly, RI 02891
401-377-2422
burnham.pam@gmail.com

Piecing with Poppers

25 Carrington St.
Lincoln, RI 02865
401-206-6025
info@piecingwithpoppers.com

Hours: 10:00am - 3:00pm Mon, Tues,
Thurs, Fri, and Sat or by appointment

About:

"Piecing with Poppers" was founded
in 2011 by professional quilter
Sharon Mayers. Poppers are narrow
strips of fabric that outline fabric pieces
in the entire quilt. The "Piecing with
Poppers" technique creates quilts with
colors and designs that really stand
out, or "Pop!"

www.piecingwithpoppers.com
www.facebook.com/piecingwithpoppers

Grand Opening!!

"Piecing with Poppers"
is excited to announce
the grand opening of it's
storefront in Lincoln,
Rhode Island! The store
will feature:

- Monthly Workshops
- Original Wall Hangings
- Over 20 Unique Patterns
and Poppers of over 25
colors for purchase

Saturday, September 28!

Located next to
Ryco Trimming
& Sewing Center

TAKE NOTE:

**Quilters' Stash Quilt
Shop is going out of
business.**

NEW HOURS:

Wed thru Sat: 10 to 6

Sundays: 12 to 5

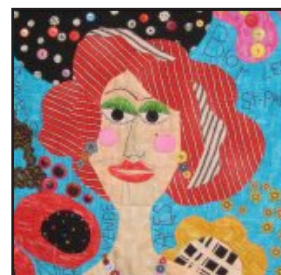
**Check website for
details:**

www.quilters-stash.com

WHO ME?

We will be voting at our September meeting on all the Summer Challenge quilts, and prizes will be awarded! The challenge theme for summer 2013 was "Who Me?" and members were encouraged to create a 24" x 24" self-portrait of themselves as a quilter. The real challenge will be to see if other members can pick you out from the crowd!

The quilts will also be displayed as a group at the NBQA show in April.



2014 QUILT SHOW FABRIC CHALLENGE

We purchased one more bolt of the challenge fabric Black Contempo Floral #22536 (see photo below) which is part of the fabric line Sunburst by Studio 8 for Quilting Treasures. The fabric was offered to the new NBQA members at the August New Member meeting and the remainder will be available for sale at the September Meeting.

We are selling fat half yards of the challenge fabric for \$5.00.

Fabric Challenge quilted items must be brought to the February 2014 regular meeting of NBQA. We will have the members vote that evening for their favorites in several categories.

Any quilted item that is constructed using 80% or more of Quilting Treasures fabric will be eligible to be considered for the Quilting Treasures award at the 2014 NBQA Quilt show.

We will have more information about the fabric challenge in future newsletters.



NBQA Bus Trip

Saturday, November 2, 2013

to

"A Quilter's Gathering"

Our itinerary includes

Admission to "A Quilter's Gathering"

(Radisson Hotel, Manchester, NH)

Stop at Emma's Quilt Cupboard (Franklin, MA)

Lunch available at the show

Trip price = \$50.00

Includes: transportation to show and shop, admission to show & driver's tip

We will leave from Route 117,

Warwick, RI Park & Ride

at 8:00 AM and return at approximately 7:00 PM

You must sign up by October 17, 2013 NBQA meeting or call Louise at 401-323-0255

mug mats

Please sew mug Mats!!!

Unfortunately, we do not have a supply of mug mats left over from the previous quilt show.

We need about 1600 mats for the show. So please use up your extra unused blocks or blocks practicing a new techniques. They make great mats.

I will have some directions for two different types at the September meeting, and I will have my big mug there to collect any mats you kindly made over the summer.


Virginia Perry



Kindred Quilters
*Original sewing patterns for
 inspiration and enjoyment*
www.kindredquilters.com
www.kindredquilters.etsy.com
 contact us - info@kindredquiltersri.com

Lois Johnsen 401-932-9285
 Shari Migdail-Smith 401-580-1583

YOUR FULL SERVICE EMBROIDERY COMPANY




EMBROIDERY SEWING CO.
DENISE C. GREENLUND
 PRESIDENT/OWNER

401-397-3582
 401-480-6567 - cell
 401-397-0777 - fax
embsew@aol.com

74 CLUB HOUSE RD
WEST GREENWICH, RI 02817

Sue's Creations

Susan Ellis
 Longarm Machine Quilter



1291 Middle Rd.
 East Greenwich, R.I. 02818
 (401) 884-6459
sellis1291@verizon.net



Ocean Waves Quilting Company
 Pat Harrison oceanwavesqc@verizon.net
Featherweights by Bob
 Bob Harrison hfranklin32@verizon.net
 401.667.0214

CLASSIFIED

Each NBQA member is allowed 1 free ad per year.
 Subsequent ads are \$5.00 each or \$25.00 per year.

If you have a "Classified" you would like to run in the next newsletter, e-mail it to info@nbquilts.org.



FOR SALE:

Bernina Quilt Frame (<http://www.bernina.com/en-US/Products/BERNINA-products/BERNINA-Accessories/Special-Quilting-Accessories/BERNINA-Quilt-Frame-us>)

Price: \$750.00 - includes:

Grace Company Gooseneck Lamp with bulb (<http://www.graceframe.com/site/component/content/article/6-accessories/40-gooselamp>)

Grace Speed Control (<http://www.graceframe.com/site/grace-speed-control>)

All in pristine condition. Depending upon your location, may be able to deliver. Contact Judy Chase 401-764-0282 jchase21@cox.net



FOR SALE:

HQ16 with stitch regulator, 11' Quilt Table, ruler base, laser and bobbin winder. \$5,900. Has low stitch count. Please contact Fran Arpin at greyhounds99@gmail.com.



QUILTERS' RETREAT

Hampton Inn, Coventry, RI
 January 24-26, 2014 (Fri-Sun)



\$295 /person single occupancy (\$225 double occupancy)

Includes 2 nights lodging, sewing space open 24 hours, meals, & hotel amenities (indoor pool, exercise room, free WiFi in public spaces)

Weekend activities include: Chocolate Lovers Tasting / Wine Tasting / Show & Tell
 Sew from 9 AM Friday until 3 PM Sunday — Who needs to sleep?



Weekend co-sponsored by Island Creations by Louise and Folk Art Quilts

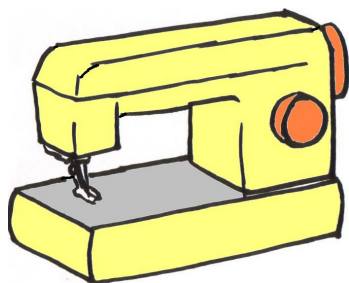
Gift bags and goodies provided by Folk Art Quilts, Wakefield, RI

For additional hotel details: www.coventry.hamptoninn.com

For additional weekend details: www.islandcreationsbylouise.blogspot.com
 or call Louise at 401-323-0255



space is limited | reserve early with \$50 deposit | deadline 12/15/13



NBQA 2013-14 WORKSHOPS

All workshops will be held at The Sewing Room, 567 South County Trail, Exeter, RI from 9 am - 4 pm unless noted. Costs range from \$35-40 for members and \$40-45 for nonmembers. More info at www.nbqa.org/workshops or contact Hope Barton at 860-377-3718.

September 21, 2013

Wild Women, Mixed Media Art Quilts – Cathey LaBonte

Cost: \$35 members, \$40 non members

NOTE: Supply list is on NBQA website and NO sewing machine needed. Kit fee of \$20 includes: stamp making materials, paint, dyes, wild fabrics, Angelina fibers, Texture Magic™, Solvy™, Lutradur®, Tyvek® and more.

UPCOMING WORKSHOPS:

October 18, 2013

Underwater Fantasy – Leah Allman

November 22, 2013

Chinese Lattice – Ann Lainhart

January 18, 2014

Tsuekineko Picture – Allison Wilbur

February 20, 2014

Cripps Pink Apple Workshop – Susan Brubaker Knapp

February 21, 2014

Peacock Feather Workshop – Susan Brubaker Knapp

March 21, 2014

Patchwork Illusions – Karen Combs

May 17, 2014

Floral Images – Needle Turned Applique – Maria Lage

Upcoming Events & Quilt Shows

Sept 19-22, 2013

Pennsylvania National Quilt Extravaganza –
Greater Philadelphia Expo Center, Oaks, PA
www.quiltfest.com

October 4-6, 2013

Proper Bostonian Quilters 2013 Quilt Show–
Saint Theresa School, West Roxbury, MA
(www.properbostonianquilters.org)

October 5-6, 2013

Belknap Mill Quilters Guild 36th Annual Har-
vest of Quilts – Conference Center at Lake
Opechee Inn, Laconia, NH (www.bmqg.org)

October 17-19, 2013

N.H. Quilters' Harvest Hop – five participating
NH quilt shops (www.nhshophops.com)

October 18-20, 2013

Ninigret Quilters Quilt Show – Westerly
Armory, Westerly, RI (<http://ninigretquilters.blogspot.com/p/quilt-show.html>)



www.patfergusonquilts.com

Author~ "Zen Quilting Workbook"

Certified Zentangle Teacher

Longarm Quilting Services, Trunk Shows & Workshops,
Zentangle & Zen Quilting Books & Supplies
Quilt Care & Storage Products, Machine Quilting Tools & Notions

Block of the Month for 2013-14

MYSTERY QUILT

The Block of the Month Rules and Block Instructions will be posted on the NBQA website.

Block and quilt construction information will be posted every 3 weeks or so.

Quilt block patterns will be obtained from various quilt block sites such as Quilters Cache. You will be provided with a list of blocks and will choose which blocks you want to make from that list.

Style: A Sampler Quilt with various construction techniques and various sized blocks.

Size: 54in x 54in up to 60in x 60in depending on your choice of borders.

Theme: Spring Season

Fabrics: A 54in x 54in quilt would require 3-3.5 yards of fabric. You will have a choice of blocks to make, so exact material requirements cannot be accurately projected. Assemble a group of fabrics that you like and that work well together. You don't necessarily need a large amount of any one fabric. I made my quilt using what I had in my stash.

Colors: Fabric colors are your choice.

Pick one color that will be used in every pieced block (Main Color). It is your choice as to whether you use one single focus fabric, or use several fabrics of the same color. For example, my main color is green, so each of the pieced blocks in my quilt has some green fabric in it.

Meetings: Sign up for participation in this year's BOM project at the BOM table at the meetings. Once you are signed up, your name will be included in the BOM drawing for fat quarters at each subsequent meeting.

You may bring blocks to the meetings if you want to show them, or if you have questions about construction. However, it is not required that you bring your blocks to each meeting.

Assistance with Project: Come to the BOM table before the meeting or during the meeting break to ask questions about the blocks. You can email questions to Susan Chace at cameron.chace@yahoo.com.



Blaine's
sewing machine center
family owned for over 60 years
sales and service since 1950

401-463-8824
1280 Oaklawn Ave.,
Cranston, RI
www.blainesewing.net
Hours: Tu.-Fri. 10a-5:30p; Th. 10a-8p; Sat. 10a-5p

Where Customer Service
Is 'SEW' Important!

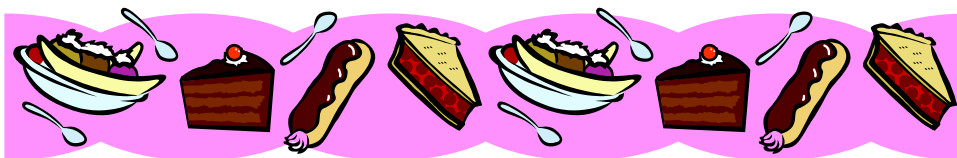


Bernina
Babylock
Janome
Elna
Necchi



Cotton Theory®
QUILTING
Gail A. Macera
Certified Cotton Theory Instructor
Public and Private Lessons
86 Pheasant Drive
Cranston, RI 02920-1223

Phone: (401)451-0061
gmquilting@cox.net
<http://www.gmquilting.com>



From the Hospitality Committee

“Summer’s almost gone...” but our NBQA Year has just begun!! We had a very successful New Members’ Meeting in August, and the Hospitality Committee is looking forward to an exciting and busy fall schedule. As always, we rely on all of you to make our meetings great by volunteering to bring refreshments to keep our hungry membership fed!! Hospitality will continue to supply hot and cold beverages throughout the year, and we ask that the members take turns in bringing delicious “finger-food size” items each month.

Suggestions for refreshment donations include:

SWEETS: Cookies, cupcakes, pastries, tarts, cake, brownies, biscotti, candy

SAVORY: Cheese, crackers, quiche, pepperoni, olives, nuts, dips, pretzels, chips, popcorn

HEALTHY: Fruits, veggies, trail mix, yogurt, seeds, tofu, granola bars

These are merely suggestions to stimulate your thinking. However, please do make sure that whatever you bring is already in small pieces, or can be easily cut up.

This year, we will have our Hospitality refreshment **sign-up sheet in the Lobby** next to the Membership Table where you check in at each meeting. This will make it easy for volunteers to sign up for the next meeting as they wait in the Membership line, so please be on the lookout for our clipboard.

Another change is that when you drop off your refreshment donation in the Kitchen prior to each meeting, you will be given a ticket that will enter you in the raffle for our centerpiece prizes. This **raffle will be exclusively for that meeting’s donors**, so please be sure to pick up your ticket before you leave the Kitchen!!

On behalf of the Hospitality Committee, I thank all of you for your generous support, and look forward to another great year!!

Peggy Ann Lane



FROM THE LIBRARY

Our collection of CD’s/DVD’s is available for members to borrow at our monthly meetings. To check out these items sign the index card located in each CD/DVD with your name and date and give it to the librarian. When returning CD’s/DVD’s give the librarian your name and she will pull your card and check off your name.

CD’s/DVD’s are checked out for one month intervals. If you don’t return the CD/DVD when it’s due there is a fine of \$1/mo per CD/DVD.

A list of all CD/DVD’s in the NBQA library is on the web site <http://www.nbqa.org/resources/dvds/>.

The following titles are currently missing from the library. Any member that has taken out DVD’s in the past please look around and make sure they are not still in your possession.

Creative Machine Embroidery — Alison Holt

Katie Pasquini Masoput Teaches You Simple Steps to Dynamic Quilts

Knitting Daily TV

Master Machine Stitching — Susan Brubaker Knapp (Quilting Arts)

Maria Lage



NEW ENGLAND QUILT MUSEUM

First, a huge THANK YOU to all of you for your support of the museum. We raised \$1353.00 at the auction in May. You ladies really do come through and the museum is very appreciative of our efforts.

The Anniversary Quilt our guild donated is hanging in the museum store. We are named on a boat block on the quilt. Look for it if you get a chance to go.

There are some changes at the museum. There is a new Executive Director, Nora Burchfield. She has a background in event planning and fundraising – talents needed by the museum to stay in the black. I have had the pleasure of meeting her a few times this summer. She is very energetic and looking forward to working with everyone associated with the museum.

We have our first meeting with Nora on September 25th. I hope you will all continue to help in the support of the museum.

Once again, thank you for making our job easier.

Virginia Perry & Sue Stedman

**THE
QUILT
AND
CABBAGE**



**538 Main Street (Rt. 20)
P.O. Box 534
Sturbridge, MA 01566
(508) 347-3023**

Est. 1991

Quilting Cottons • Batiks
Homespun • Flannels
Woolen Fabric & Yarn
Stencils • Books • Patterns
Custom Quilts
Gift & Specialty Items

Mon., Wed. thru Sat. 9:30-4:30
Sunday 11:00-4:00
Closed Tuesday

Jeanne Molitoris, Owner



LITTLE REST QUILTING

for your machine quilting needs

**APRIL GILROY
Wakefield, R.I.
401-783-7742**

New England Quilt Museum ~ Upcoming Workshops

Saturday, September 28, 2013, 10am-4pm

QUILTING INSPIRATION: From Inspiration to Completion with Beatriz Grayson

Sunday, September 29, 2013, 11am-4pm

BEGINNER SASHIKO with Miho Takeuchi

Saturday, October 5, 2013, 10am-4pm

EMBELLISHED ART QUILTS: Quilting with those Bad, Bad Beads! with Amy Ropple

Saturday, October 26, 2013, 9:30am-4:30pm

SHIBORI DYEING WITH INDIGO WORKSHOP with Carol Anne Grotrian

Saturday, November 2, 2013, 10am-4pm

SOFT SCULPTURE: SWADDLED BABY DOLLS with Mimi Kirchner

Saturday, November 16, 2013, 11:00am-4:00pm

IMPROVISATIONAL PATCHWORK (currently full) with Denyse Schmidt



*Quilting fabrics and supplies
Books, patterns & notions*

Hours: Tues-Sat 10:00-5:00

*344 Main St.
Wakefield, RI 02879
(401) 789-5985*

folkartquilts@cox.net

*Owners
Evie Cherms & Mary Loftes*



magazine swap

Do you have any quilting magazines that you don't want anymore but can't bear to throw away? Bring them to the next meeting and swap them out for quilting magazines you haven't read yet!

There will be a table area with a "Magazine Swap" sign on it where you may drop off and pick up magazines.

Any magazines left at the end of the meeting will go to a book and magazine recycling center.



COMFORT QUILTS

We will be distributing the comfort quilts made last year at our September meeting. Thanks again to all the members who made quilts for these worthwhile organizations!

But our work is not over, as we will be starting more comfort quilts for the 2013-2014 year. Please mark your calendars for our quilt-a-thon on **Saturday, October 19.**

Your support and participation is greatly appreciated!

Mary Padbury & Karen Ouhרבka



**Narragansett Bay
Quilters' Association**
PO Box 614
East Greenwich, RI 02818

www.nbqa.org



New England Quilt Museum

18 Shattuck St.
Lowell, MA 01852
978-452-4207

www.nequiltmuseum.org



Lowell is located 28 miles north of Boston off Interstate 93 and 495 and Route 3. Take the Lowell Connector from either Interstate 495 (Exit 35C) or Route 3 (Exit 30N Northbound or 30A Southbound) to Thorndike Street (exit 5B). Go the 6th light and turn right onto Market Street.

Park at street meters, the Leo A. Roy Market Street Garage, or on weekends ONLY, the lot behind the museum on Middle Street.

To drive up to the door, go into the next light into Palmer Street. Go to the next light and turn left onto Merrimack Street. Go to the next corner and turn left onto Shattuck.

Museum Exhibition Schedule 2013-2014

July 11-October 6, 2013
A SLICE OF CHEDDAR
Antique Pennsylvania Quilts

October 10-December 28, 2013
ROOTS OF MODERN QUILTING
Fresh Eyes On Old Quilts

January 16-April 12, 2014
QUILT JAPAN
The 11th Quilt Nihon Exhibition

April 17-July 6, 2014
CHARMED
Every Piece Is Different

July 10-October 5, 2014
DOWN BY THE OLD MILL STREAM
Rhode Island Quilts

October 9-December 31, 2014
HUMOROUS QUILTS
Keeping Us In Stitches

HOURS

Tuesday through Saturday, 10AM -4PM.
From May 1st to October 31st, also open Sundays, Noon-4PM